

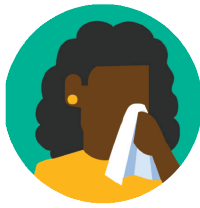


Coronavirus Self-Screening

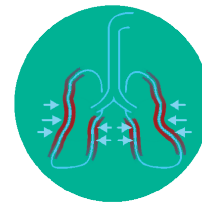
Do you have these symptoms?



**FEVER
GREATER THAN
100.4°F (38°C)**



COUGH



**SHORTNESS
OF BREATH**



CS 316129-A March 22, 2020 5:13 PM

cdc.gov/CORONAVIRUS

Do you have these exposure risk factors?

- Have you recently traveled, within the last 14 days, to an affected area for COVID-19 (coronavirus)? Refer to the Centers for Disease Control and Prevention (CDC) website for COVID-19 risk countries.
- Have you had close contact (within 6 ft. for greater than 15 minutes) with anyone with a confirmed case of COVID-19?

**STOP NOW AND LEAVE THE FACILITY IF
YOU ARE EXPERIENCING SYMPTOMS AND
EXPOSURE RISK FACTORS!**

Team Partners: You will be asked to complete a screening process with a manager before entering the facility. If symptoms and exposure risk factors are present, notify your manager immediately and leave the site.

Visitors: You will be asked to complete a screening questionnaire before entering our facility. If symptoms or any exposure risk factors are present, stop, notify your site contact, and leave the site.